



**building
something
special**

A small white star icon is located in the bottom right corner of the central black text box.

isgplc.com/earlycareers





Karen Vigar
Education Engagement
Manager



Harriet Wade
Community
Engagement
Advisor

Diversity & Championing Women in Construction



ISG is a global privately owned construction specialist, delivering places where people and businesses thrive.



What we do

/ Services

Fit out



Technology



Construction



Development



What we do

/ Sectors

Offices



Retail



Technology,
science and
health

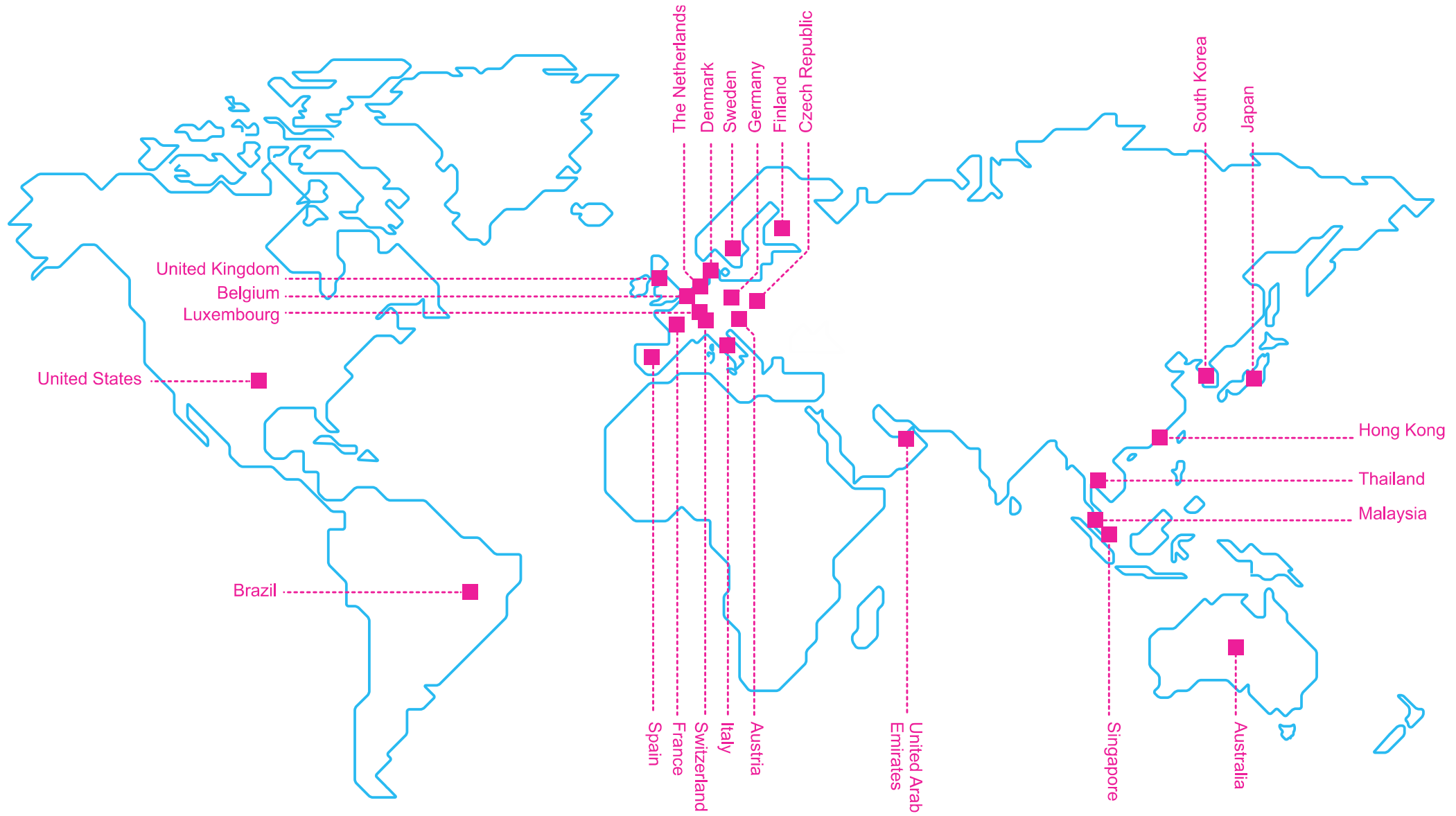


Hospitality,
leisure and living



Education and
public sector





A woman with blonde hair, wearing a grey ribbed turtleneck sweater, is seated at a desk in an office. She is smiling and looking towards the left, holding a large sheet of architectural blueprints. In front of her is a laptop and a white mug. The background shows office shelves and a blurred 'ISG' logo on a wall.

Promoting
Diverse Roles in
Construction

<https://www.youtube.com/watch?v=Eiwr2H1yBmU>

ESSENTIAL SKILLS FOR CONSTRUCTION

- Enthusiasm
- Teamwork
- Strong communication skills
- Time management
- Commercial awareness
- Leadership qualities
- Problem-solving skills
- IT skills

A hand holding a red marker is writing the question "What Are Your Strengths?" in white cursive on a brick wall. A large red oval is drawn around the text. The background is a brick wall with a hand holding a red marker writing the text.

What Are Your
Strengths?

Trade Based Careers

Bricklayer	→	£30,000
Carpenter	→	£30,000
Crane Operator	→	£36,000
Crane Supervisor	→	£38,000
Dryliner	→	£30,000
Electrician	→	£30,000
Engineer (Civil / Structural)	→	£60,000
Fork lift driver	→	£23,000
Construction Operative	→	£22,000
Painter / Decorator	→	£30,000
Plasterer	→	£28,000
Scaffolder	→	£44,000
Self Employed / Sub Contractor	→	£55,000
Steel fixer	→	£28,000
Tiler	→	£25,000



build something special *

Office Based Careers

Administrator	→	£25,000
Architect	→	£50,000
Bid Manager /Writer	→	£60,000
Commercial Manager	→	£80,000
Construction Manager	→	£55,000
Design Manager	→	£60,000
Document Controller	→	£28,000
Estimator	→	£70,000
HSQE Advisor	→	£55,000
Project Manager	→	£60,000
Planner	→	£55,000
Quantity Surveyor	→	£45,000
Site Manager	→	£55,000

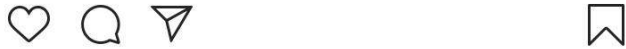
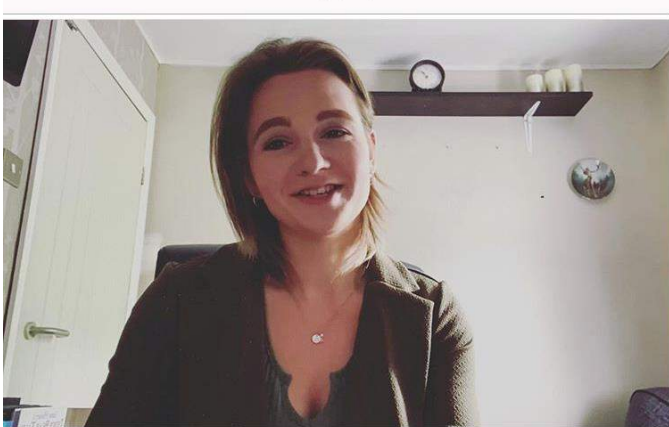


CRAFT, TECHNICAL AND DESIGN CAREERS...

The word cloud features a variety of professions in different colors and sizes. The largest word is 'STEEL FIXER' in dark red. Other prominent words include 'Plasterer' in yellow, 'Architectural Technician' in yellow, 'Stonemason' in red, 'Surveyor' in grey, and 'Bricklayer' in red. Smaller words include 'Site Engineer', 'Project Manager', 'Carpenter', 'Ceiling Fixer', 'Quantity Surveyor', 'Landscape Architect', 'Plumber', 'Roofer', 'Heating Engineer', 'Glazier', 'Site Manager', 'Town Planner', 'Steeplejack', 'Plant Engineer', 'Scaffolder', 'BIM Manager', 'CAD Operative', 'Architect', 'Civil Engineer', 'Electrician', 'Building Surveyor', 'Joiner', 'Health & Safety Officer', 'Dry Liner', and 'Quantity Surveyor'.

Site Engineer
Project Manager
Carpenter
Ceiling Fixer
Quantity Surveyor
Landscape Architect
Plasterer
Heating Engineer
Stonemason
Glazier
Plumber
Roofer
Town Planner
Steeplejack
Site Manager
Plant Engineer
Scaffolder
BIM Manager
CAD Operative
Architect
Civil Engineer
Electrician
Building Surveyor
Joiner
Health & Safety Officer
Dry Liner
Bricklayer
Quantity Surveyor
Architectural Technician

Women In Construction



Liked by [cay_1105](#) and 27 others

isglimited It was a slightly different event than normal, but no less inspiring - we were delighted to sponsor the [@womeninproperty](#) Midlands Student Awards 2020 for a second year running, as it celebrated the achievements of nine talented regional student finalists...via the medium of Zoom

Huge congratulations to all involved, including Emily Cardy, who was announced this year's winner, nominated by [@nottinghamtrentuni](#) where she is studying building surveying 🏆👏👏 Read the full story via the link in our bio 🙌 #LoveConstruction

29 June



Liked by [torcoxy](#) and 22 others

isglimited We're passionate about supporting local causes and proud that our people from our [#Cardiff](#) office have been able to give something back by supporting the [@homelessworldcup](#) last week! Hayleigh braved the rain as an information guide 🌧️👏👏 [#Cardiff2019](#) [#givingsomethingback](#) 🙌🏆 .

isglimited



"I choose to start every Monday morning, by setting myself work and personal goals for the week ahead. This allows me to clear my mind and focus on exactly what I want to achieve for myself and my team."

Danielle Lancashire
Business Development Coordinator



Liked by [chelseynicks](#) and 31 others

isglimited Setting personal and professional goals helps Danielle keep her mind focussed and clear at the start of each week. How do you... [more](#)

[View all 2 comments](#)

21 June 2019

Women In Construction



Liked by chelseynicks and 52 others

isglimited "I initially joined ISG as a document controller and transitioned into my current role of trainee assistant quantity surveyor. I'm proof that career progression is available for women in the construction industry, and at ISG, the commitment to supporting equal opportunities is clear to see."

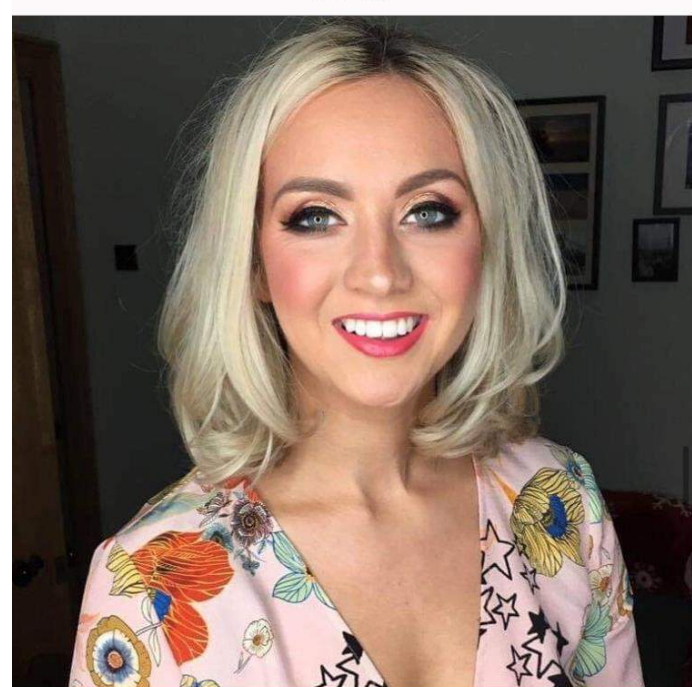
- Jasmin Delacion, trainee assistant quantity surveyor, Middle East
●●●●
#IWD2019 @internationalwomensday_global .



Liked by chelseynicks and 64 others

isglimited "My job as a design manager is very diverse, I split my time between our office and site. My role varies from day to day and I get to be involved on a range of projects from bid stage during design through to construction. I have a passion for design so find it very rewarding."

- Jane Shaw, senior design manager, Manchester
●●●●
#IWD2019 @internationalwomensday_global .



Liked by chelseynicks and 77 others

isglimited "The industry is changing its views towards women, and ISG has been one of the forward-thinking companies; I love being on site and the support I get from the guys on my team is brilliant. Looking forward to seeing more women coming into the industry and helping shape it into a more diverse workplace."

WOWEX Week at ISG – Inspiring young people and offering work experience for schools and young people



Students visited ISG's head office in Aldgate for a week-long programme of activities, including a site tour to the City of London, Primary Academy Islington (COLPAI), a project which will create a new school, nursery facility and a 14-storey residential tower that includes the demolition of an existing one-storey school, community centre and associated buildings.

- 88% of students who participated in the Aldgate programme strongly agreed they learnt a new skills / knowledge.
- 62% of those who participated felt they knew more about the construction industry.
- 42% increase in students wanting to pursue a career in the construction industry.

Championing Diversity and Inclusion in Construction



‘The construction industry is working hard to change attitudes and improve diversity. With 26% of our workforce being women more still needs to be done to promote this fantastic career path and choice’.

ISG are helping to set the conditions for a balanced workforce at every touchpoint – and engaging with pupils, teachers and parents at a much earlier stage, actively supporting and engaging with STEM subjects in school, looking outside our industry for inspirational leaders regardless of gender.

ISG Open our sites as part of Open Doors week to attract diversity in the communities we live and work



Questions

